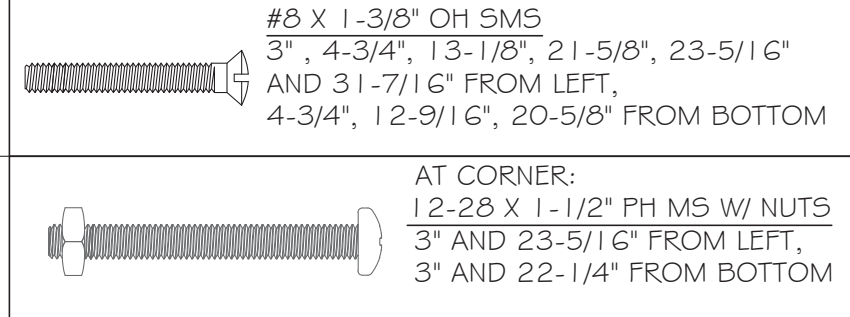
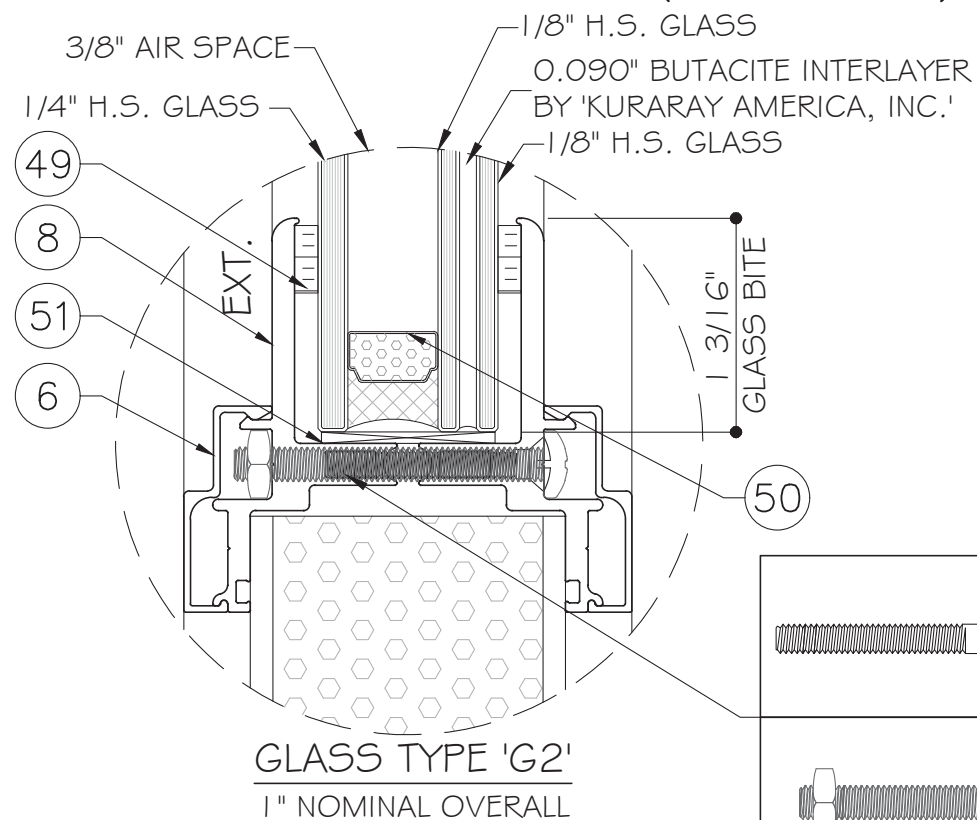
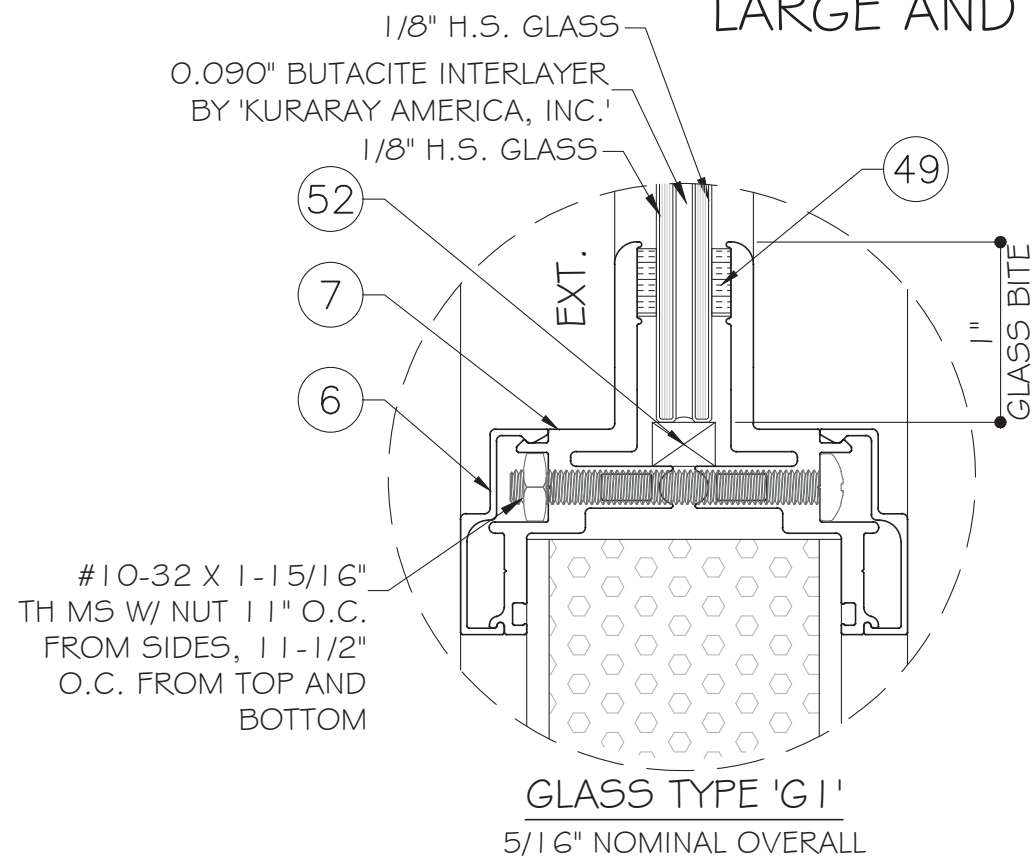


# SPECIAL-LITE, INC. FIBERGLASS FRAME OUTSWING DOORS LARGE AND SMALL MISSILE IMPACT (LMI & SMI)



NOTE:  
GLASS COMPLIES WITH ASTM E1300-09  
(3 SEC. GUSTS).

NOTES:  
EGRESS REQUIREMENTS TO BE  
REVIEWED BY BUILDING OFFICIAL.  
ALL OPENINGS PASSED WITH WATER  
INFILTRATION.

## SERIES 217, 100 & 220 FIBERGLASS OUTSWING DOOR (LMI & SMI)

- THIS PRODUCT HAS BEEN DESIGNED AND TESTED TO COMPLY WITH THE REQUIREMENTS OF THE FLORIDA BUILDING CODE 7TH EDITION (2020) / 8TH EDITION (2023) INCLUDING HIGH VELOCITY HURRICANE ZONE (HVHZ).
- DOORS RATED FOR LARGE AND SMALL MISSILE IMPACT AND DO NOT REQUIRE SHUTTERS.
- DOORS ARE APPROVED FOR WATER AND AIR INFILTRATION.
- ANCHORS SHALL BE AS LISTED, SPACED AS SHOWN ON DETAILS. ANCHORS EMBEDMENT TO BASE MATERIAL SHALL BE BEYOND WALL DRESSING OR STUCCO.
- ANCHORING OR LOADING CONDITIONS NOT SHOWN IN THESE DETAILS ARE NOT PART OF THIS APPROVAL.
- MATERIALS INCLUDING BUT NOT LIMITED TO STEEL/METAL SCREWS THAT COME INTO CONTACT WITH OTHER DISSIMILAR MATERIALS SHALL MEET THE REQUIREMENTS OF THE FLORIDA BUILDING CODE 7TH EDITION (2020) / 8TH EDITION (2023) SECTION AS APPLICABLE.

- METAL STRUCTURES NOT BY SPECIAL LITE, INC. MUST SUPPORT LOADS IMPOSED BY DOOR SYSTEM AND TRANSFER THEM TO THE BUILDING STRUCTURE
- 1X OR 2X WOOD BUCKS BY OTHERS MUST BE ANCHORED PROPERLY TO TRANSFER LOADS TO THE STRUCTURE.
- A LOAD DURATION FACTOR IN ALLOWABLE STRESS IS USED IN DESIGN OF ANCHORS INTO WOOD ONLY.
- DOOR FRAME: PULTRUDED FIBERGLASS
- DOOR PANEL: 0.120" SANDSTONE FRP OR PULTRUDED FIBERGLASS
- ULTIMATE LOAD OBTAINED FROM ASCE 7-22, MULTIPLY BY 0.6 SHALL BE LESS THAN OR EQUAL TO MAX. DESIGN LOAD IN THIS DOCUMENT. THE DESIGN LOADS SHOWN IN THIS DOCUMENT ARE ALLOWABLE DESIGN LOADS.
- MANUFACTURER'S LABEL SHALL BE LOCATED ON A READILY VISIBLE LOCATION IN ACCORDANCE WITH SECTION 1709.9.3 OF FLORIDA BUILDING CODE LABELING TO COMPLY WITH SECTION 1709.9.2.
- LOCK:  
REFER TO PAGE HW1 FOR LOCK OPTIONS.

**LIMITATIONS OF USE**

A- THIS PRODUCT EVALUATION DOCUMENT (P.E.D.) PREPARED BY THIS ENGINEER IS GENERIC AND DOES NOT PROVIDE INFORMATION FOR A SITE SPECIFIC PROJECT. I.E. WHERE THE SITE CONDITIONS DEVIATE FROM THE P.E.D.

B- CONTRACTOR TO BE RESPONSIBLE FOR THE SELECTION, PURCHASE AND INSTALLATION OF THIS PRODUCT BASED ON THIS PRODUCT EVALUATION PROVIDED HE/SHE DOES NOT DEVIATE FROM THE CONDITIONS DETAILED ON THIS DOCUMENT.

C- THIS PRODUCT EVALUATION DOCUMENT WILL BE CONSIDERED INVALID IF ALTERED BY ANY MEANS.

D- SITE SPECIFIC PROJECTS SHALL BE PREPARED BY A FLORIDA REGISTERED ENGINEER OR ARCHITECT WHICH WILL BECOME THE ENGINEER OF RECORD (E.O.R.) FOR THE PROJECT AND WHO WILL BE RESPONSIBLE FOR THE PROPER USE OF THE P.E.D.

E- THIS P.E.D. SHALL BEAR THE DATE AND ORIGINAL SEAL AND SIGNATURE OF THE PROFESSIONAL ENGINEER OF RECORD THAT PREPARED IT.

FLORIDA APPROVAL:  
FL#21856.3

YIPING WANG, P.E.  
FLORIDA REGISTRATION  
No. 559953  
C.A.N. 28637

August 18th, 2023

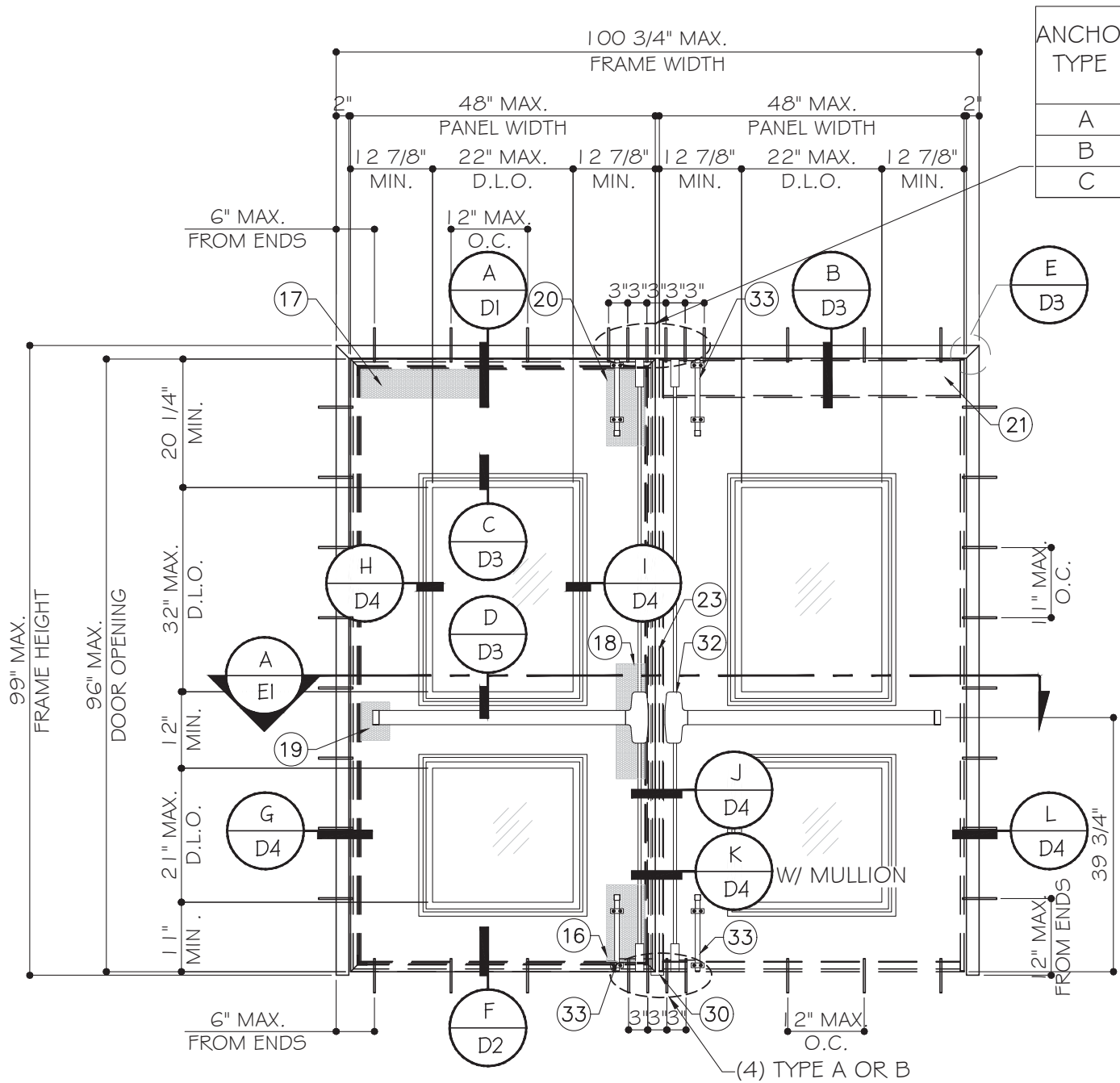
NO.	DATE	DESCRIPTION
1	7/31/17	2017 FBC
2	7/28/20	2020 FBC
3	06/18/23	2023 FBC

MCY ENGINEERING, INC.  
GLAZING CONSULTANTS  
12781 MIRAMAR PARKWAY #301  
MIRAMAR, FL 33027  
P: 305.271.0117  
www.MCYEngineering.com mcy@mcyengineering.com

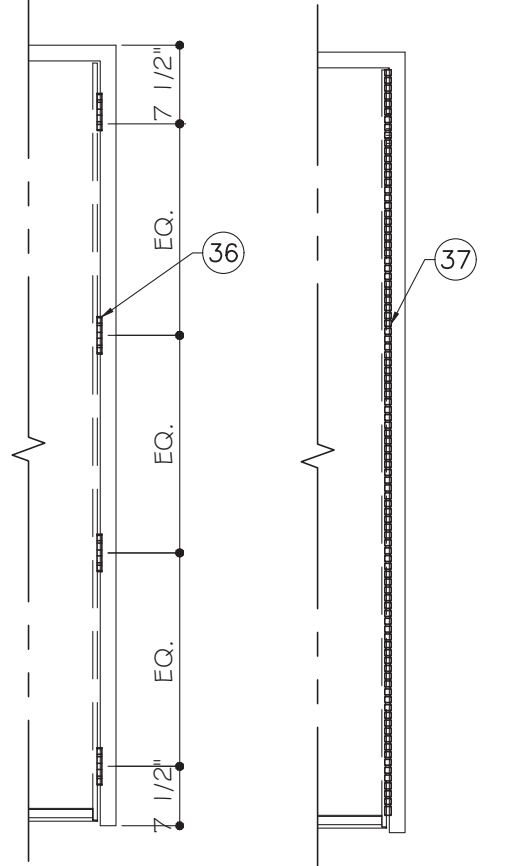
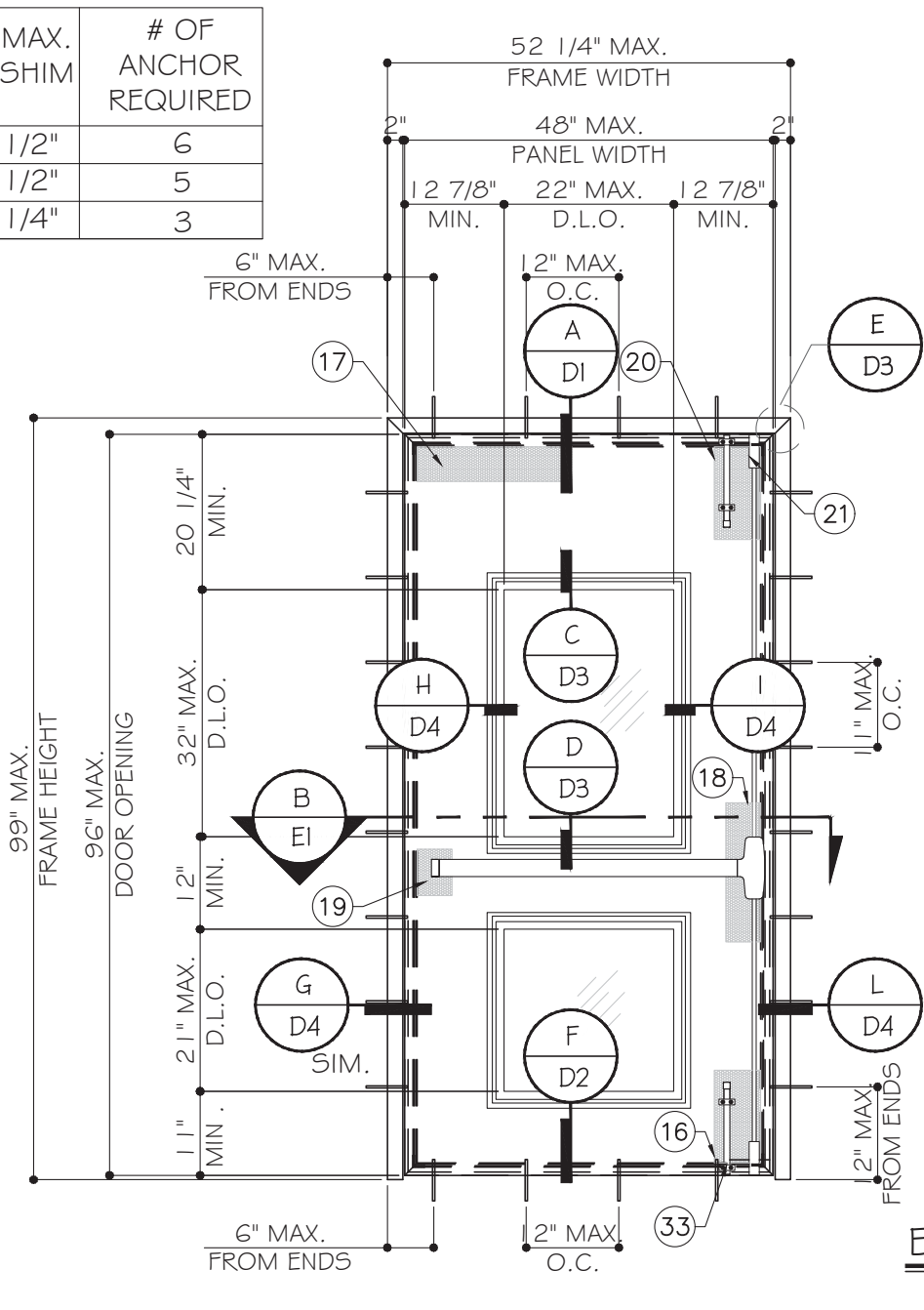
FIBERGLASS FRAME OUTSWING DOOR WITH SKIN (LMI & SMI)  
SPECIAL-LITE, INC.  
860 SOUTH WILLIAMS STREET  
P.O. BOX 6  
DECATUR, MI 49045  
WWW.SPECIAL-LITE.COM

**Special-Lite**  
Doors with more life.

COVER	
DATE	08.18.2023
SCALE	AS SHOWN
DRAWN	James
PROJECT	MCY 17-005
DRAWING NO. AD17-04	
1 OF 10	



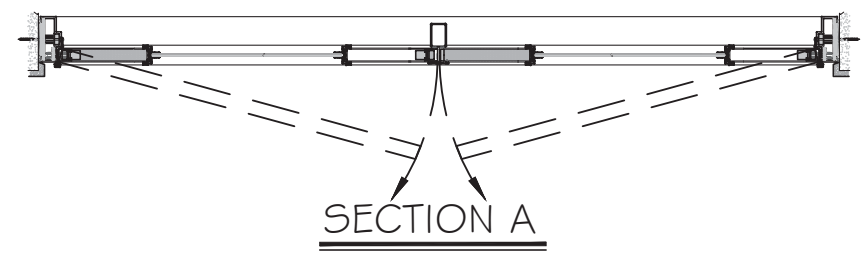
ANCHOR TYPE	MAX. SHIM	# OF ANCHOR REQUIRED
A	1/2"	6
B	1/2"	5
C	1/4"	3



TYPICAL EXTERIOR ELEVATION (XX)

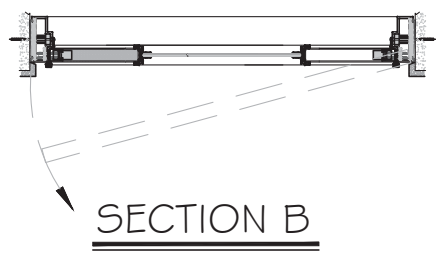
TYPICAL EXTERIOR ELEVATION (X)

HINGE LAYOUT



SECTION A

FOR LOCK OPTIONS  
SEE SHEET HW 1



SECTION B

DESIGN LOADS (FOR SIZES SHOWN ABOVE OR SMALLER) AS PERMITTED BY FBC
+47.0 PSF
-65.0 PSF
SILL TYPE 1

DESIGN LOADS (FOR SIZES SHOWN ABOVE OR SMALLER) AS PERMITTED BY FBC
+65.0 PSF
-65.0 PSF
SILL TYPE 2

FLORIDA APPROVAL:  
FL#21856.3

YIPING WANG, P.E.  
FLORIDA REGISTRATION  
#55953  
C.A.N. 28637  
No 55953

August 18th, 2023

NO.	DATE	DESCRIPTION
1	7/31/17	2017 FBC
2	7/28/20	2020 FBC
3	08/18/23	2023 FBC

MCY ENGINEERING, INC.  
GLAZING CONSULTANTS

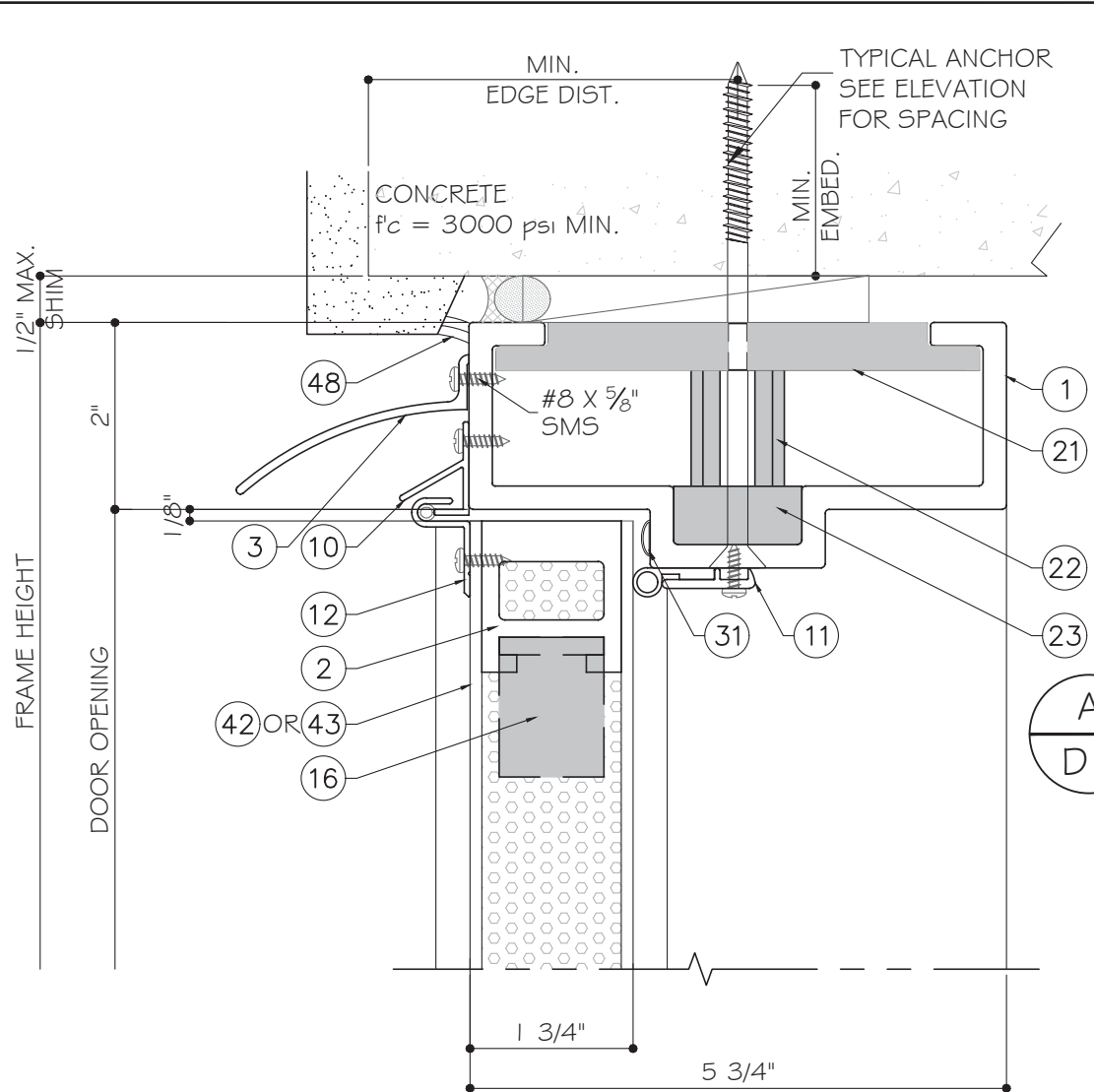
12781 MIRAMAR PARKWAY #301  
MIRAMAR, FL 33027 P: 305.271.0117  
www.MCYEngineering.com mcy@mcyengineering.com

FIBERGLASS FRAME OUTSWING DOOR WITH SKIN (LMI & SMI)

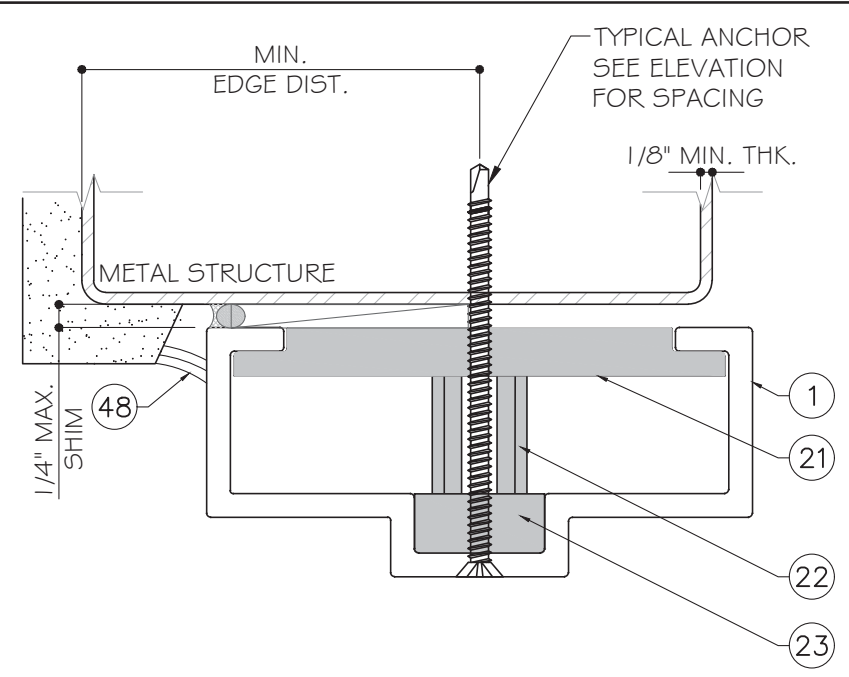
SPECIAL-LITE, INC.  
860 SOUTH WILLIAMS STREET  
P.O. BOX 6  
DECATUR, MI 49045  
WWW.SPECIAL-LITE.COM

**Special-Lite**  
Doors with more life.

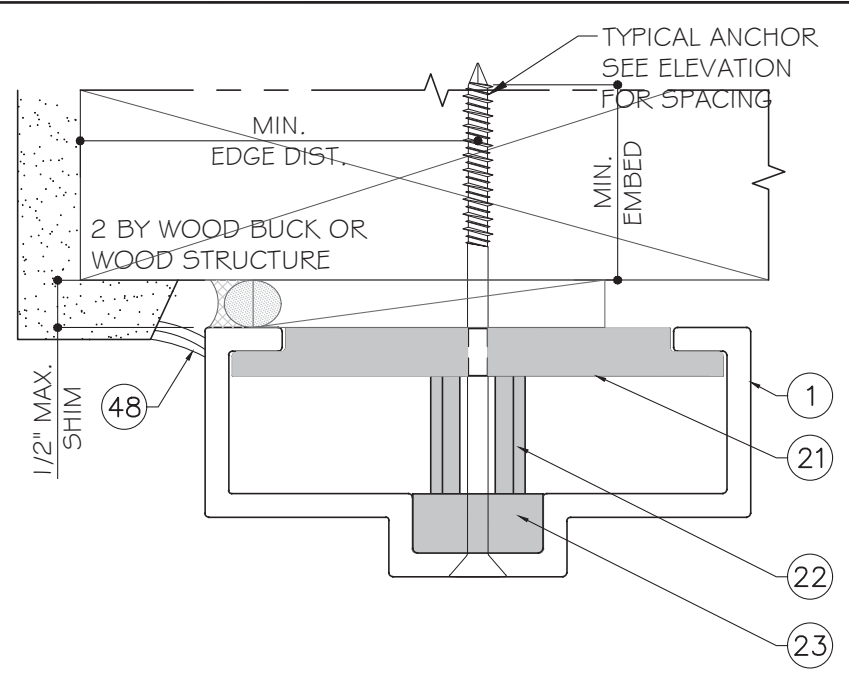
DATE	08.18.2023
SCALE	AS SHOWN
DRAWN	James
PROJECT	MCY 17-005
DRAWING NO.	AD17-04
2 OF 10	



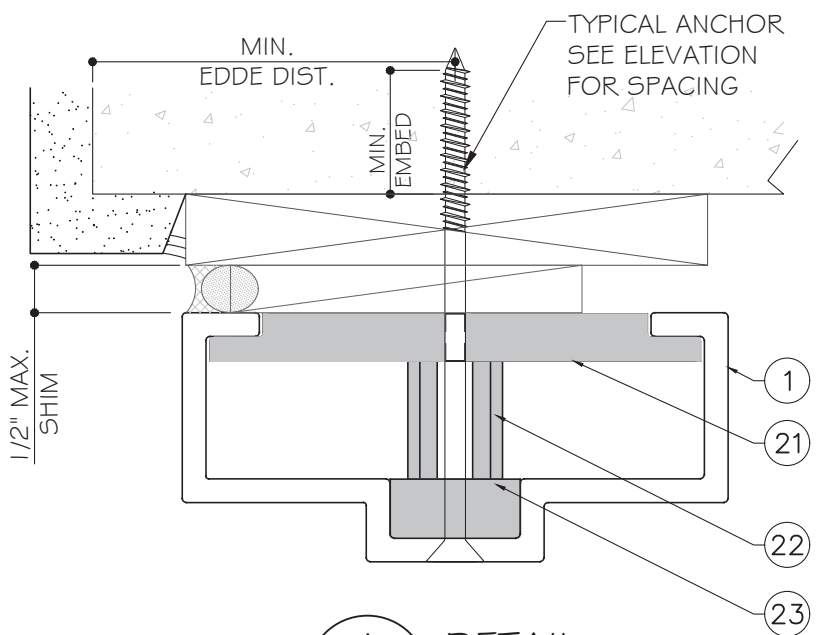
A  
DI  
DETAIL



A  
DI  
DETAIL  
OPTION



A  
DI  
DETAIL  
OPTION



A  
DI  
DETAIL  
OPTION

**TYPICAL ANCHORS:**

(SEE ELEVATIONS FOR SPACING)

TYPE 'A': 1/4" DIA. ITW TAPCON (Fu=120 KSI, Fy=92 KSI)  
 1-1/2" MIN. EMBED INTO WOOD STRUCTURE  
 OR THRU 1X OR 2X WOOD BUCK INTO CONCRETE / MASONRY  
 1-1/2" MIN. EMBED INTO CONCRETE / MASONRY

TYPE 'B': 1/4" DIA. DEWALT ULTRACON+ (Fu=164 KSI, Fy=148 KSI)  
 1-1/2" MIN. EMBED INTO WOOD STRUCTURE  
 OR THRU 1X OR 2X WOOD BUCK INTO CONCRETE / MASONRY  
 1-1/2" MIN. EMBED INTO CONCRETE / MASONRY

TYPE 'C': #14 SMS OR TEKS SELF DRILLING SCREW (GRADE 5)  
 INTO METAL STRUCTURE

**SUBSTRATE:**

CONCRETE: f'c=3 KSI MIN. (HEAD/SILL OR JAMB)  
 MASONRY: f'c= 2KSI MIN. (JAMB ONLY)  
 WOOD: SG=0.55 MIN. (HEAD/JAMB)  
 STEEL: 1/8" MIN. THK., A36 MIN. (HEAD/JAMB)

**TYPICAL EDGE DISTANCE:**

INTO CONCRETE / MASONRY: 2-1/2" MIN.  
 INTO WOOD: 1" MIN.  
 INTO METAL: 3/4" MIN.

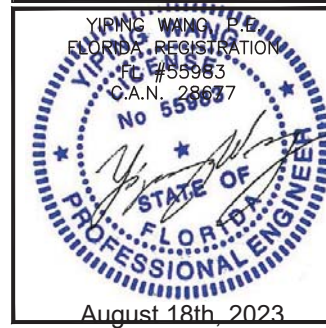
NO.	DATE	DESCRIPTION
1	7/31/17	2017 FBC
2	7/28/20	2020 FBC
3	06/18/23	2023 FBC

MCY ENGINEERING, INC.  
 GLAZING CONSULTANTS  
 12781 MIRAMAR PARKWAY #301  
 MIRAMAR, FL 33027 P: 305.271.0117  
 www.MCYEngineering.com mcy@mcyengineering.com

FIBERGLASS FRAME OUTSWING DOOR WITH SKIN (LMI & SMI)  
 SPECIAL-LITE, INC.  
 860 SOUTH WILLIAMS STREET  
 P.O. BOX 6  
 DECATUR, MI 49045  
 WWW.SPECIAL-LITE.COM



FLORIDA APPROVAL:  
 FL#21856.3

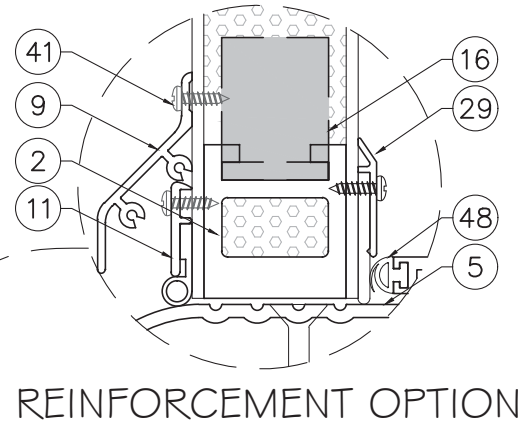
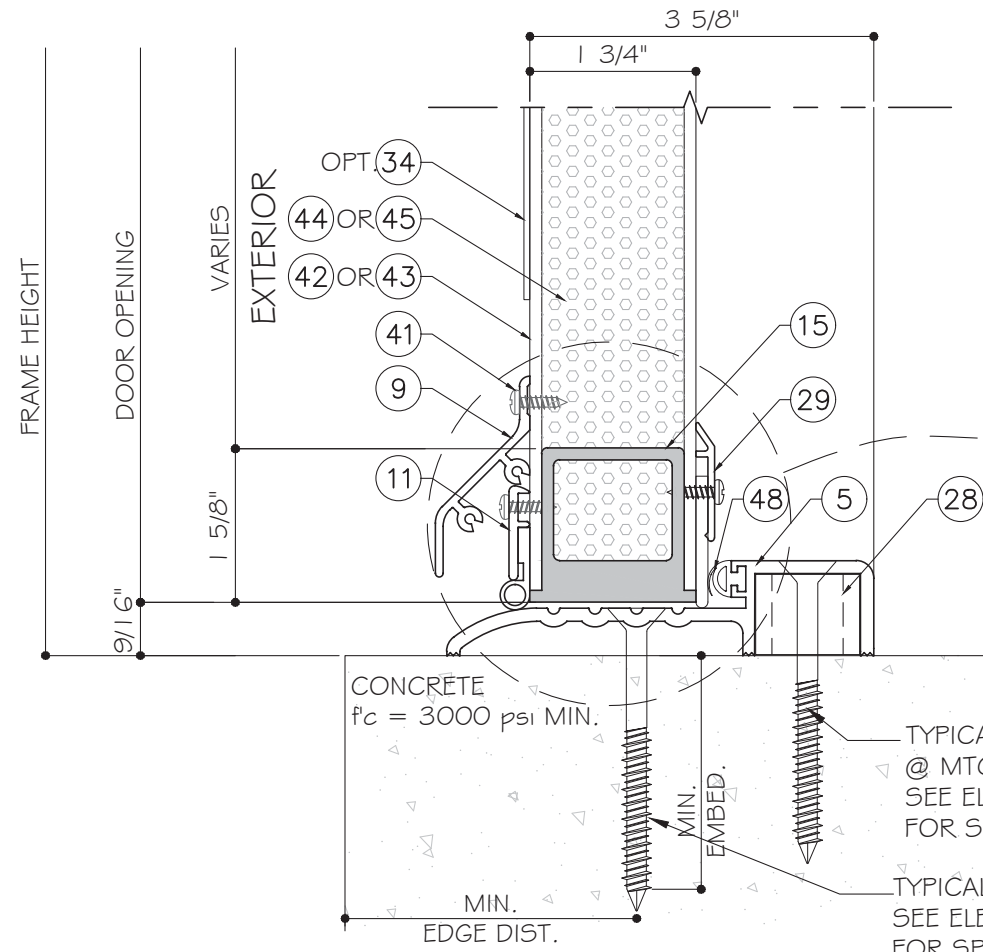


D1	
DATE	08.18.2023
SCALE	AS SHOWN
DRAWN	James
PROJECT	MCY 17-005

DRAWING NO.  
 AD17-04

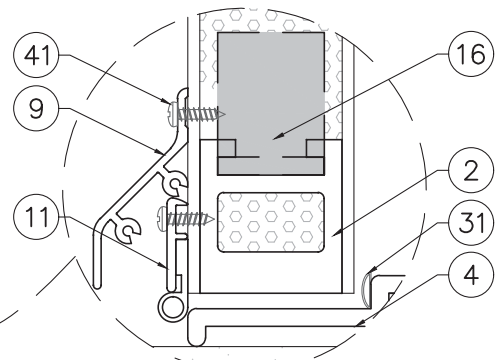
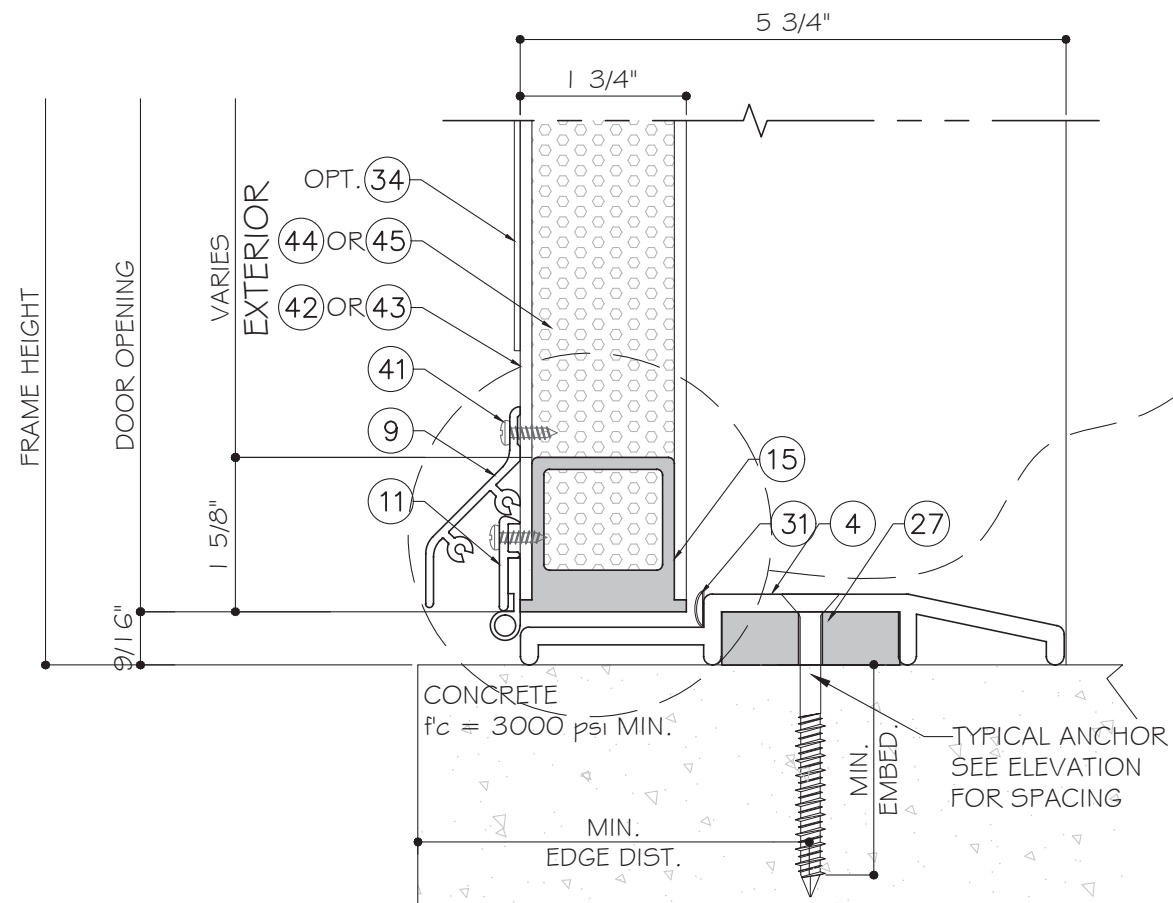
3 OF 10

August 18th, 2023



REINFORCEMENT OPTION

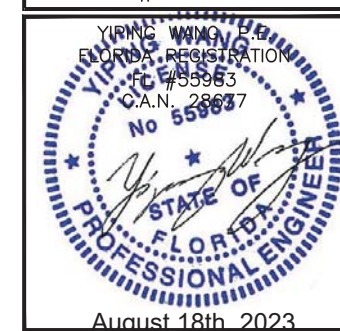
F DETAIL  
D2 SILL TYPE 1



REINFORCEMENT OPTION

F DETAIL  
D2 SILL TYPE 2

FLORIDA APPROVAL:  
FL#21856.3



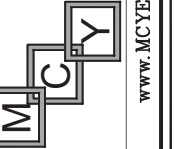
FIBERGLASS FRAME OUTSWING DOOR WITH SKIN (LMI & SMI)

SPECIAL-LITE, INC.  
860 SOUTH WILLIAMS STREET  
P.O. BOX 6  
DECATUR, MI 49045  
WWW.SPECIAL-LITE.COM



MCY ENGINEERING, INC.  
GLAZING CONSULTANTS

12781 MIRAMAR PARKWAY #301  
MIRAMAR, FL 33027 P: 305.271.0117  
www.MCYEngineering.com mcy@mcyengineering.com

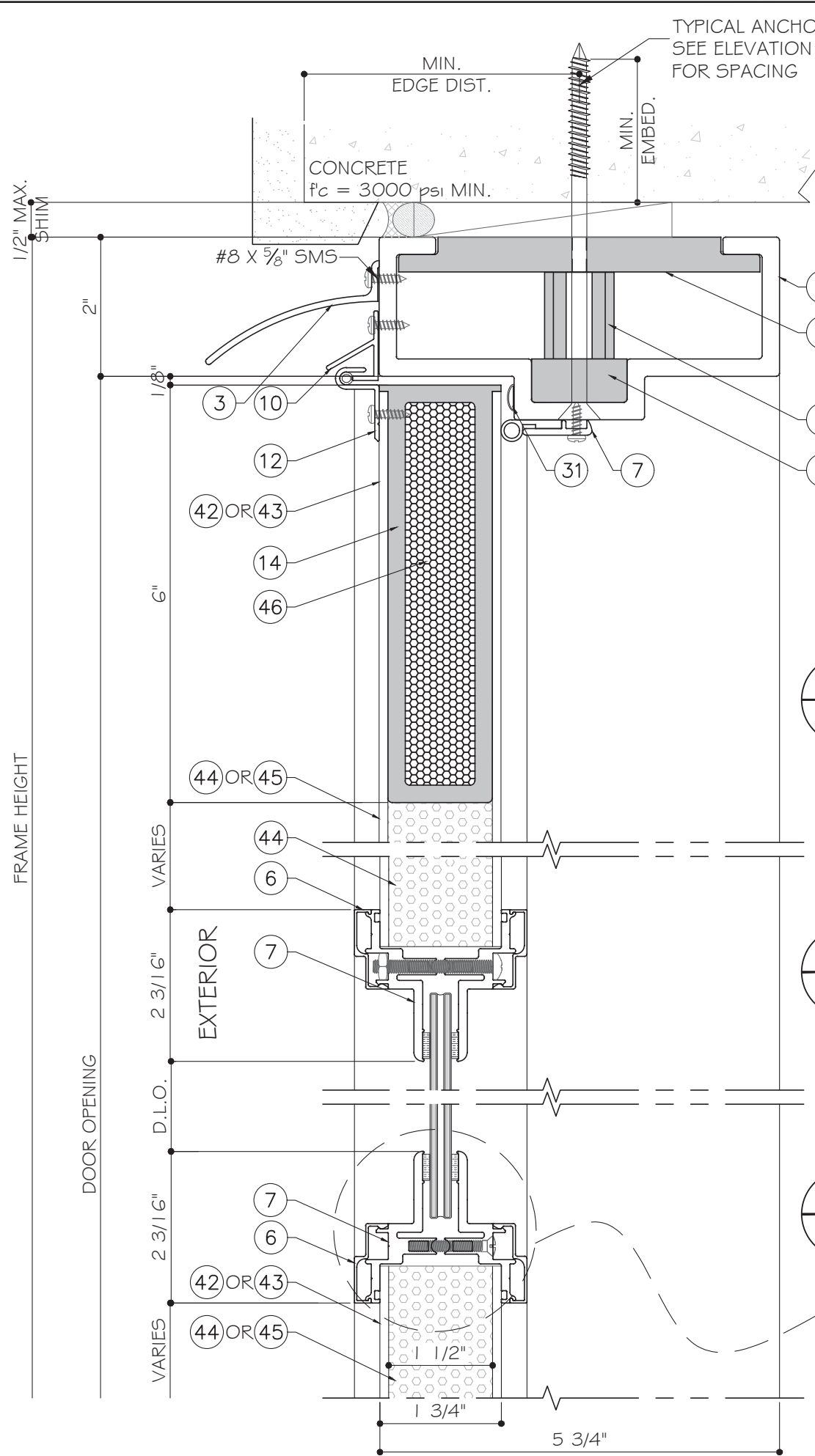


NO.	DATE	DESCRIPTION
1	7/31/17	2017 FBC
2	7/28/20	2020 FBC
3	08/18/23	2023 FBC

DATE	08.18.2023
SCALE	AS SHOWN
DRAWN	James
PROJECT	MCY 17-005

DRAWING NO.  
AD17-04

4 OF 10

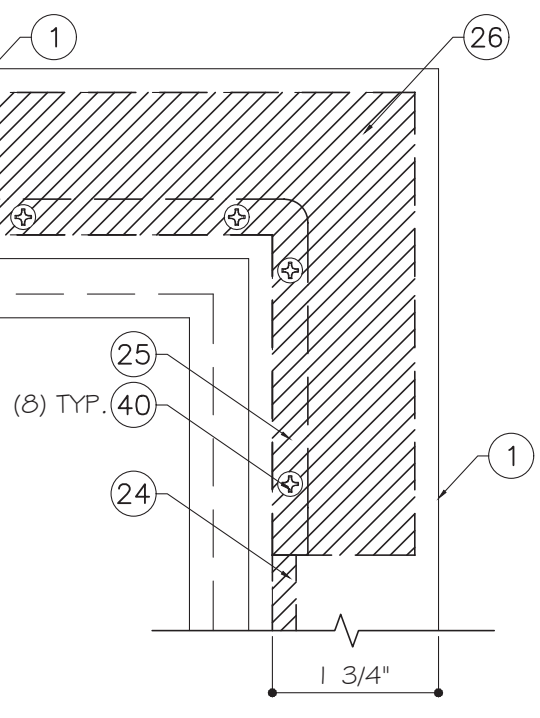


**B**  
D3  
DETAIL

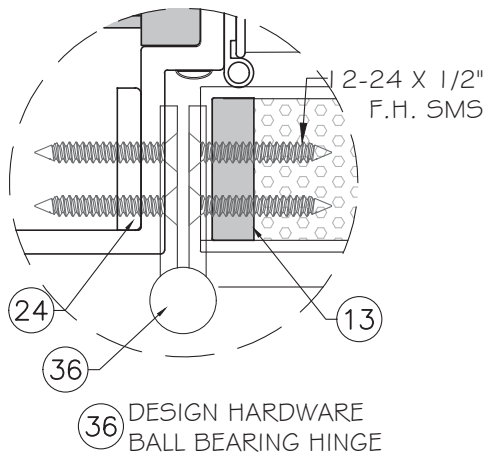
**C**  
D3  
DETAIL

**D**  
D3  
DETAIL

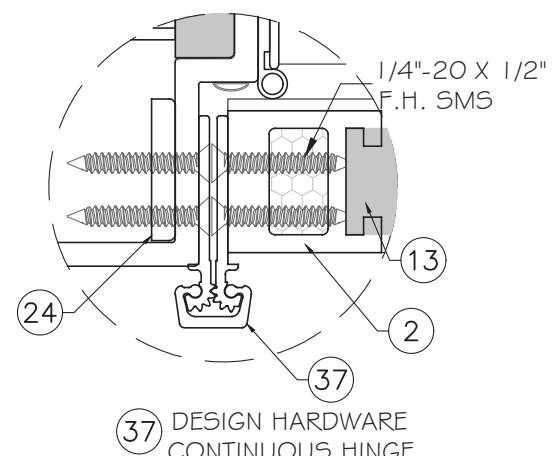
GLASS OPTIONS INTERCHANGEABLE.  
SEE COVER SHEET FOR GLAZING  
OPTIONS.



**E**  
D3  
DETAIL

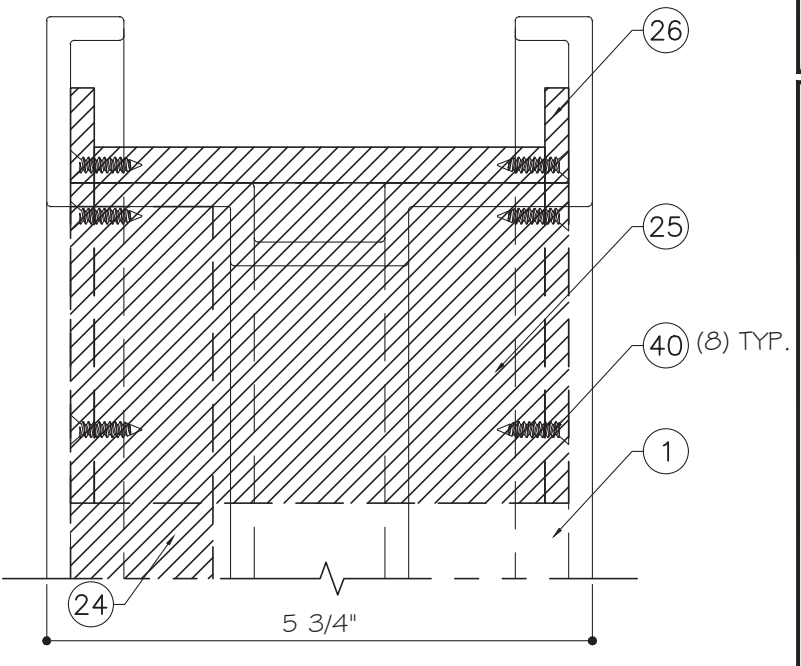


**36** DESIGN HARDWARE  
BALL BEARING HINGE



**37** DESIGN HARDWARE  
CONTINUOUS HINGE

**HINGE OPTIONS**



**SECTION C-C**

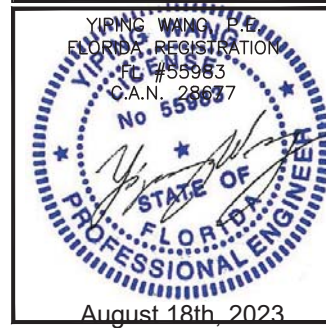
NO.	DATE	DESCRIPTION
1	7/31/17	2017 FBC
2	7/28/20	2020 FBC
3	06/18/23	2023 FBC

MCY ENGINEERING, INC.  
GLAZING CONSULTANTS  
12781 MIRAMAR PARKWAY #301  
MIRAMAR, FL. 33027 P: 305.271.0117  
www.MCYEngineering.com mcy@mcyengineering.com

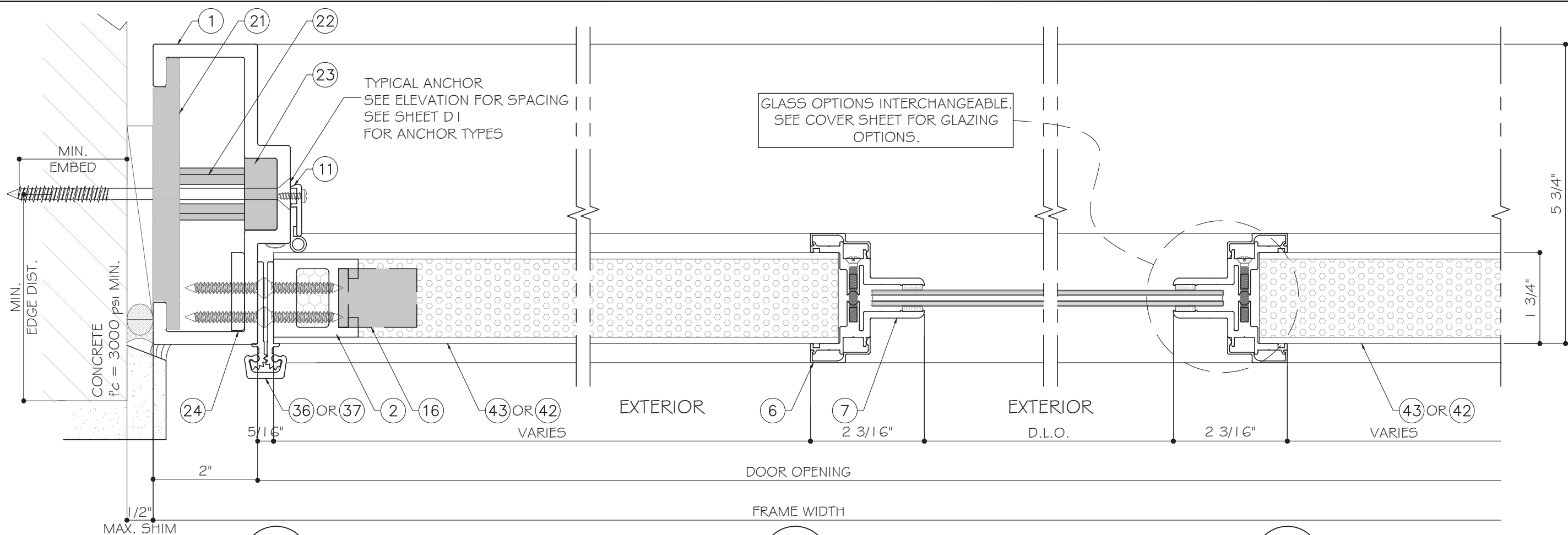
FIBERGLASS FRAME OUTSWING DOOR WITH SKIN (LMI & SMI)  
SPECIAL-LITE, INC.  
860 SOUTH WILLIAMS STREET  
P.O. BOX 6  
DECATUR, MI 49045  
WWW.SPECIAL-LITE.COM



FLORIDA APPROVAL:  
FL#21856.3



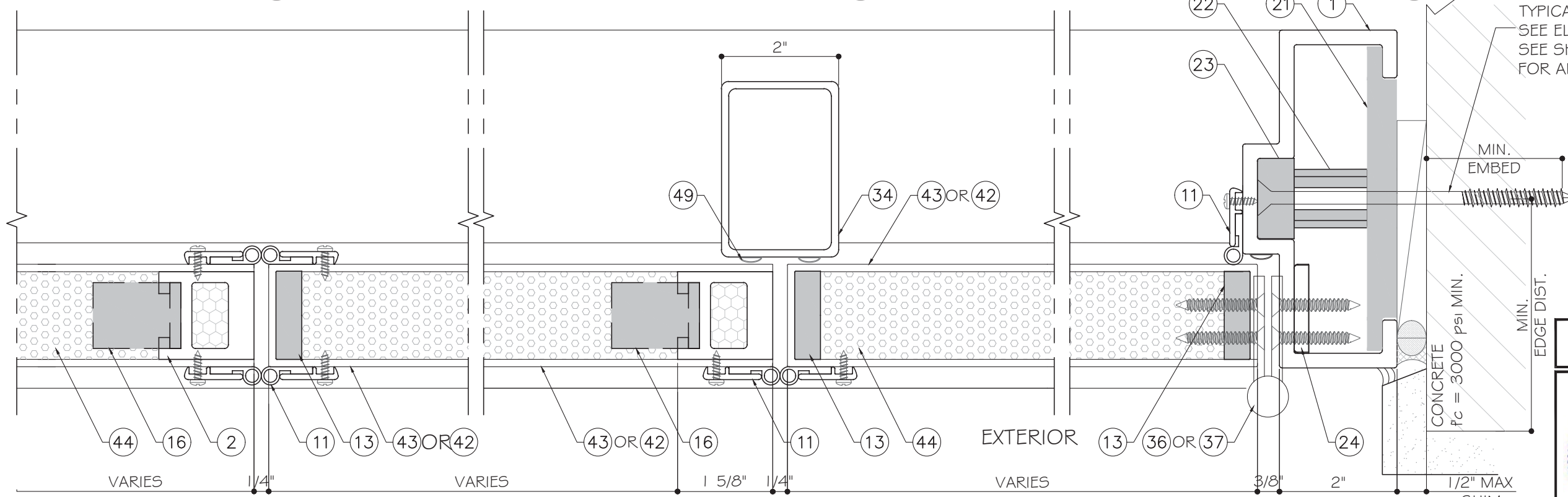
<b>D3</b>	
DATE	08.18.2023
SCALE	AS SHOWN
DRAWN	James
PROJECT	MCY 17-005
DRAWING NO. AD17-04	
5 OF 10	



G  
D4  
DETAIL

H  
D4  
DETAIL

I  
D4  
DETAIL



J  
D4  
DETAIL

K  
D4  
DETAIL

L  
D4  
DETAIL

FLORIDA APPROVAL:  
FL#21856.3

YIPING WANG, P.E.  
FLORIDA REGISTRATION  
No. 55993  
C.A.N. 28837

August 18th, 2023

NO.	DATE	DESCRIPTION
1	7/31/17	2017 FBC
2	7/28/20	2020 FBC
3	08/18/23	2023 FBC

MCY ENGINEERING, INC.  
GLAZING CONSULTANTS  
12781 MIRAMAR PARKWAY #301  
MIRAMAR, FL 33027  
P: 305.271.0117  
www.MCYEngineering.com mcy@mcyengineering.com

FIBERGLASS FRAME OUTSWING DOOR WITH SKIN (LMI & SMI)  
SPECIAL-LITE, INC.  
860 SOUTH WILLIAMS STREET  
P.O. BOX 6  
DECATUR, MI 49045  
WWW.SPECIAL-LITE.COM

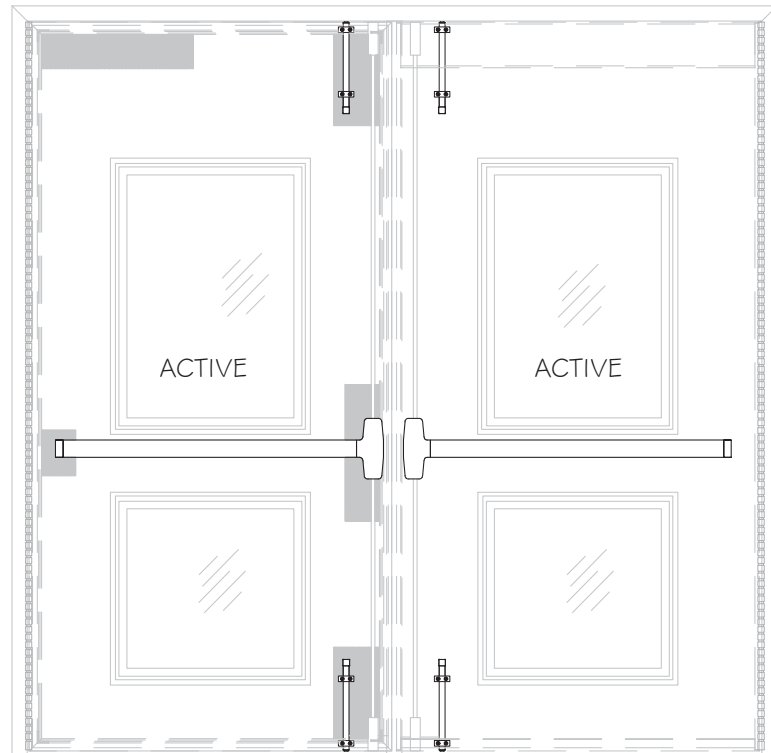


D4	
DATE	08.18.2023
SCALE	AS SHOWN
DRAWN	James
PROJECT	MCY 17-005
DRAWING NO. AD17-04	
6 OF 10	

# HARDWARE:

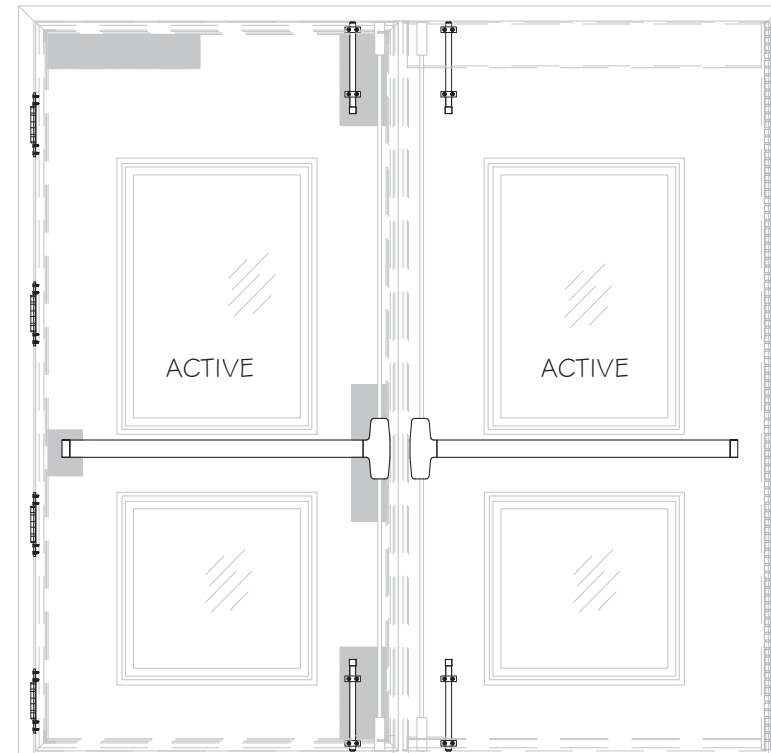
## DOOR OPTION 1

- LOCK  
ACTIVE PANEL: VON DUPRIN 9957 3 POINT LOCK W/ ACTIVATING PANIC DEVICE, VERTICAL RODS AT TOP AND BOTTOM, 39" FROM BOTTOM. FLUSH MOUNT METALLIC STRIKE PLATE @ 40" FROM BOTTOM.
- SURFACE BOLTS  
ACTIVE PANEL: IVES SB360  
ENGAGEMENT: 1 3/16" AT THRESHOLD AND 9/16" AT HEAD.
- MULLION: VON DUPRIN REMOVABLE MULLION AT MID SPAN ATTACHED TO FRAME HEAD USING A TWO PIECE METALLIC BRACKET W/ (2) 1/2 X 1 - 1/2" FM SMS AND (3) 1/4"-20 X 5/8" PH SMS INTO THE MULLION. FASTENED TO THRESHOLD W/ (2) 1/4" X 4 FH LAG SCREWS.



## DOOR OPTION 2

- LOCK  
LEFT ACTIVE PANEL: DESIGN HARDWARE 2000V 2 POINT LOCK EXIT PANIC DEVICE, WITH VERTICAL RODS AT 39 3/4" FROM BOTTOM.  
  
RIGHT ACTIVE PANEL: DESIGN HARDWARE 1000V 2 POINT LOCK EXIT PANIC DEVICE, WITH VERTICAL RODS AT 39 3/4" FROM BOTTOM.
- SURFACE BOLTS  
ACTIVE PANEL: IVES SB360  
ENGAGEMENT: 1 3/16" AT THRESHOLD AND 9/16" AT HEAD.



FLORIDA APPROVAL:  
FL#21856.3

YIPING WANG, P.E.  
FLORIDA REGISTRATION  
FC #55953  
C.A.N. 28637  
No 55953

August 18th, 2023

HW1	
DATE	08.18.2023
SCALE	AS SHOWN
DRAWN	James
PROJECT	MCY 17-005

DRAWING NO.  
AD17-04

7 OF 10

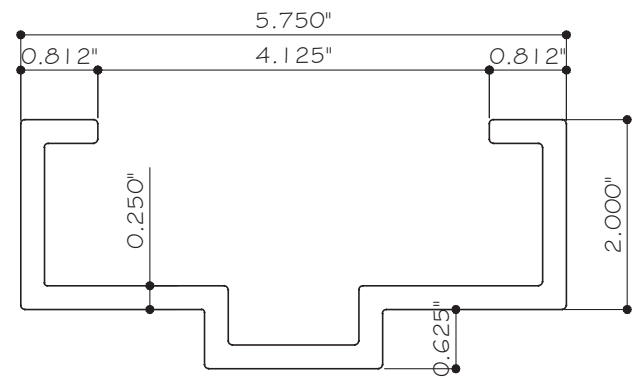
NO.	DATE	DESCRIPTION
1	7/31/17	2017 FBC
2	7/28/20	2020 FBC
3	08/18/23	2023 FBC

MCY ENGINEERING, INC.  
GLAZING CONSULTANTS

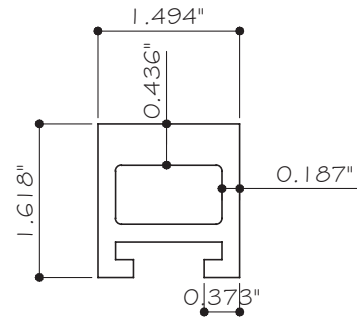
12781 MIRAMAR PARKWAY #301  
MIRAMAR, FL 33027 P: 305.271.0117  
www.MCYEngineering.com mcy@mcyengineering.com

FIBERGLASS FRAME OUTSWING DOOR WITH SKIN (LMI & SMI)

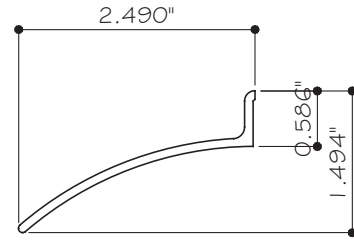
SPECIAL-LITE, INC.  
860 SOUTH WILLIAMS STREET  
P.O. BOX 6  
DECATUR, MI 49045  
WWW.SPECIAL-LITE.COM



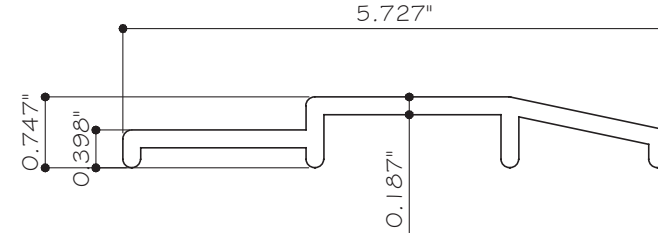
① FRAME JAMB / HEAD  
AFC-15010 FIBERGLASS



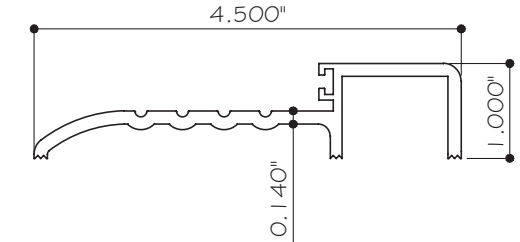
② SOLID FIBERGLASS STILE  
AFC-2000 FIBERGLASS



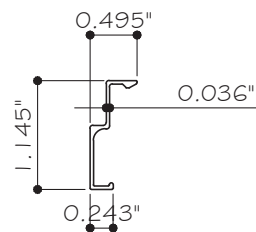
③ 142 RAIN DRIP  
ALUM. 6063-T6



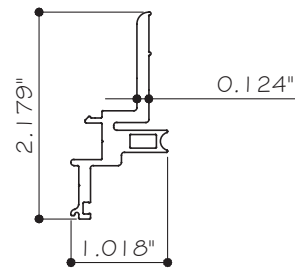
④ STANDARD BUMPER THRESHOLD  
AFC-4010 FIBERGLASS



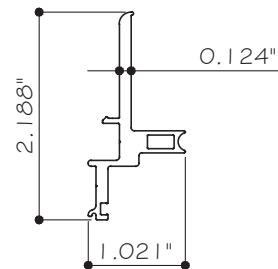
⑤ 561 THRESHOLD  
ALUM. 6063-T6



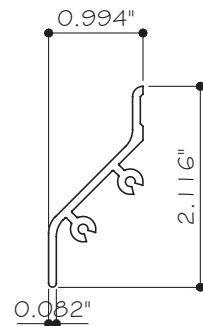
⑥ 70-800 SNAP  
COVER  
ALUM. 6063-T6



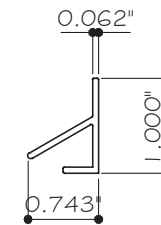
⑦ 70-802 5/16" LITE KIT  
ALUM. 6063-T6



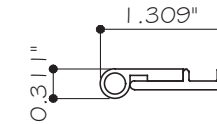
⑧ 70-801 1" LITE KIT  
ALUM. 6063-T6



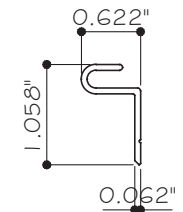
⑨ 141 RAIN DRIP  
ALUM. 6063-T6



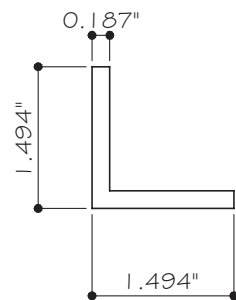
⑩ 124A WATERSHED  
ALUM. 6063-T6



⑪ 328 DOOR SWEEP  
ALUM. 6063-T6



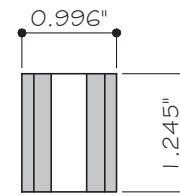
⑫ 123NA WATERSHED  
ALUM. 6063-T6



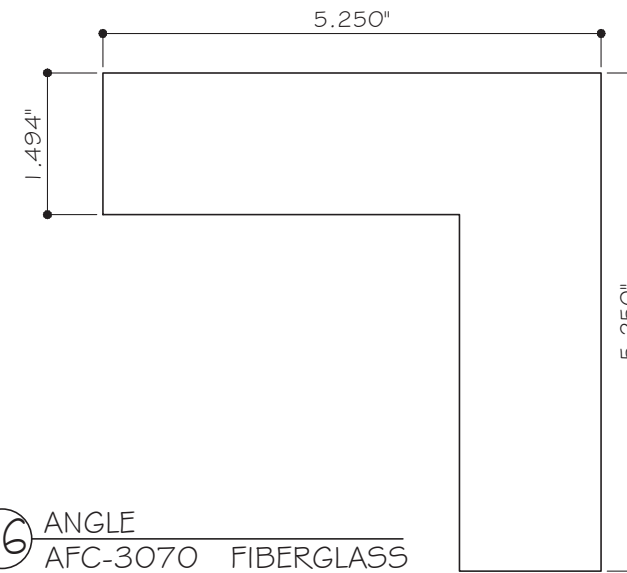
⑬ AFC-2010 ANGLE  
ALUM. 6063-T6



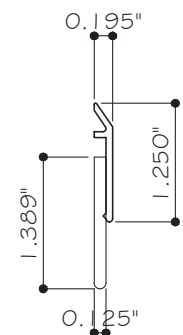
⑰ FRP ANCHOR BRACKET  
AFC-3000 FIBERGLASS



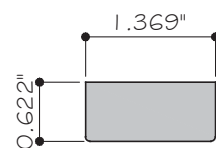
⑱ FRP ANCHOR BRACKET  
AFC-3010



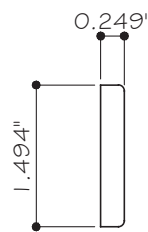
⑳ ANGLE  
AFC-3070 FIBERGLASS



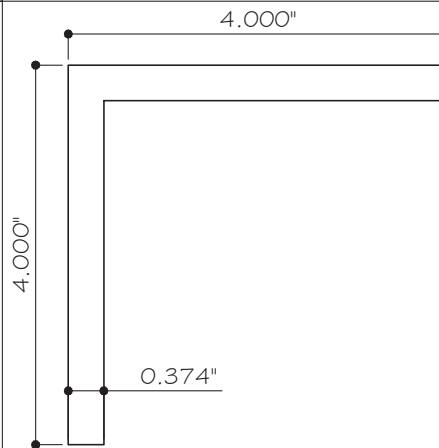
⑳ 39 SURFACE MOUNTED  
DOOR SWEEP  
ALUM. 6063-T6



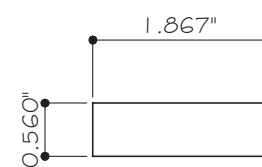
㉓ FRP ANCHOR BRACKET  
AFC-3020



㉔ HINGE REINF.  
AFC-3030 FIBERGLASS



㉕ ANGLE  
AFC-3060 FIBERGLASS



㉖ BUMPER THRESHOLD  
ANCHOR REINF.  
AFC-4020 FIBERGLASS

NO.	DATE	DESCRIPTION
1	7/31/17	2017 FBC
2	7/28/20	2020 FBC
3	06/18/23	2023 FBC

REVISIONS

MCY ENGINEERING, INC.  
GLAZING CONSULTANTS

12781 MIRAMAR PARKWAY #301  
MIRAMAR, FL 33027 P: 305.271.0117  
www.MCYEngineering.com mcy@mcyengineering.com

FIBERGLASS FRAME OUTSWING DOOR WITH SKIN (LMI & SMI)

SPECIAL-LITE, INC.  
860 SOUTH WILLIAMS STREET  
P.O. BOX 6  
DECATUR, MI 49045  
WWW.SPECIAL-LITE.COM



FLORIDA APPROVAL:  
FL#21856.3

YIPING WANG, P.E.  
FLORIDA REGISTRATION  
FC #55953  
C.A.N. 28637  
No 55953

STATE OF FLORIDA  
PROFESSIONAL ENGINEER

August 18th, 2023

PARTS	
DATE	08.18.2023
SCALE	AS SHOWN
DRAWN	James
PROJECT	MCY 17-005

DRAWING NO.  
AD17-04

8 OF 10

# BILL OF MATERIALS

ITEM	PART	DESCRIPTION	MATERIAL	MANUFACTURER / REMARKS
1	AFC-15010	FRAME JAMB / HEAD	FIBERGLASS	SPECIAL-LITE, INC.
2	AFC-2000	SOLID FIBERGLASS STILE	FIBERGLASS	SPECIAL-LITE, INC.
3	142	ZERO INTERNATIONAL RAIN DRIP	ALUM. 6063-T6	ZERO INTERNATIONAL
4	AFC-4010	STANDARD BUMPER THRESHOLD	FIBERGLASS	SPECIAL-LITE, INC.
5	561	RABBETED THRESHOLD	ALUM. 6063-T6	ZERO INTERNATIONAL
6	70-800	SPECIAL-LITE LITE KIT SNAP COVER	ALUM. 6063-T6	SPECIAL-LITE, INC.
7	70-802	SPECIAL-LITE 5/16" LITE KIT	ALUM. 6063-T6	SPECIAL-LITE, INC.
8	70-801	SPECIAL-LITE 1" LITE KIT	ALUM. 6063-T6	SPECIAL-LITE, INC.
9	141	RAIN DRIP	ALUM. 6063-T6	ZERO INTERNATIONAL
10	124A	NATIONAL GUARD INTERLOCKING WATER SHED	ALUM. 6063-T6	NATIONAL GUARD, ATTACHED W/ #6 X 3/4" SMS
11	328	ZERO INTERNATIONAL SURFACE APPLIED DOOR SWEEP	ALUM. W/ SOLID NEOPRENE	ZERO INTERNATIONAL, ATTACHED W/ #6 X 1/2" SMS
12	123NA	NATIONAL GUARD INTERLOCKING WATER SHED	ALUM. 6063-T6	NATIONAL GUARD, ATTACHED W/ #6 X 3/4" SMS
13	AFC-1000	PULTRUDED DOOR STILE	FIBERGLASS	SPECIAL-LITE, INC.
14	AFC-1010	PULTRUDED CLOSER REINFORCEMENT	FIBERGLASS	SPECIAL-LITE, INC.
15	AFC-1020	PULTRUDED FLUSH BOTTOM RAIL	FIBERGLASS	SPECIAL-LITE, INC.
16	AFC-2010	1-1/2" X 1-1/2" X 0.187" THK. ANGLE	FIBERGLASS	SPECIAL-LITE, INC.
17	AFC-2020	FIBERGLASS TUBE REINFORCEMENT	FIBERGLASS	SPECIAL-LITE, INC.
18	AFC-2050	FIBERGLASS TUBE REINFORCEMENT	FIBERGLASS	SPECIAL-LITE, INC.
19	AFC-2090	FIBERGLASS TUBE REINFORCEMENT	FIBERGLASS	SPECIAL-LITE, INC.
20	AFC-2100	6" X 12" SURFACE BOLT REINFORCEMENT	20 LB URETHANE FOAM	SPECIAL-LITE, INC.
21	AFC-3000	FRP ANCHOR BRACKET	FIBERGLASS	SPECIAL-LITE, INC.
22	AFC-3010	FRP ANCHOR BRACKET	FIBERGLASS	SPECIAL-LITE, INC.
23	AFC-3020	FRP ANCHOR BRACKET	FIBERGLASS	SPECIAL-LITE, INC.
24	AFC-3030	1-3/8" X 8" LG. X 1/4" THK. HINGE REINF.	FIBERGLASS	SPECIAL-LITE, INC.
25	AFC-3060	ANGLE	FIBERGLASS	SPECIAL-LITE, INC.
26	AFC-3070	1-1/2" X 5-1/4" X 5-1/4" X 1/4" THK. FRP REINFORCEMENT ANGLE	FIBERGLASS	SPECIAL-LITE, INC.
27	AFC-4020	FIBERGLASS BUMPER THRESHOLD ANCHOR REINF.	FIBERGLASS	SPECIAL-LITE, INC.
28	PT-8003	1" X 0.855" X 16" LG. ALUM. BAR REINF.	ALUM. 6061	SPECIAL-LITE, INC. ATTACHED W/ (4) 1/4" X 5" FH WOOD SCREW
29	39	ZERO INTERNATIONAL SURFACE APPLIED DOOR SWEEP	ALUM. W/ SOLID NEOPRENE	ZERO INTERNATIONAL, ATTACHED W/ #6 X 1/2" SMS
30	9954KRM	VON DUPRIN REMOVABLE MULLION, 3" X 2" X 1/8" THK, 94-1116" LG.	STEEL	VON DUPRIN
31	XI153BTSINGLE	TRIM-LOK SELF ADHESIVE BULB SEAL	EPDM SPONGE	TRIM-LOK
32	9957	VON DUPRIN 3 POINT EXIT DEVICE @ 39" FROM BOTTOM	-	VON DUPRIN
33	SB-360	IVES SURFACE BOLTS @ 6" FROM EACH END	STEEL	IVES
34	-	0.0625" SS ARMOR PLATE	ST/ST	SPECIAL-LITE, INC.
35	2000V	DESIGN HARDWARE 2 POINT EXIT DEVICE	ST/ST	DESIGN HARDWARE, @ 39 3/4" FROM BOTTOM
36	BB5	BALL BEARING HINGES @ 7 1/2", 34 1/2", 62" AND 88 3/4" FROM BOTTOM.	STEEL	DESIGN HARDWARE
37	FM95HD	CONTINUOUS HINGE	ALUM.	DESIGN HARDWARE
38	SC-17	#8 X 1-1/4" OH SMS	-	-

NO.	DATE	DESCRIPTION
1	7/31/17	2017 FBC
2	7/28/20	2020 FBC
3	08/18/23	2023 FBC

**MCY ENGINEERING, INC.**  
GLAZING CONSULTANTS

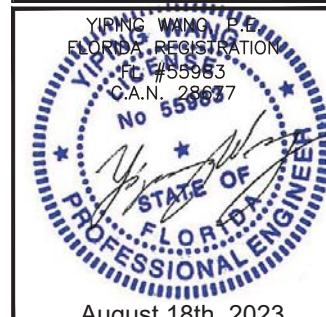
12781 MIRAMAR PARKWAY #301  
MIRAMAR, FL 33027 P: 305.271.0117  
www.MCYEngineering.com mcy@mcyengineering.com

FIBERGLASS FRAME OUTSWING DOOR WITH SKIN (LMI & SMI)

SPECIAL-LITE, INC.  
860 SOUTH WILLIAMS STREET  
P.O. BOX 6  
DECATUR, MI 49045  
WWW.SPECIAL-LITE.COM



FLORIDA APPROVAL:  
**FL#21856.3**

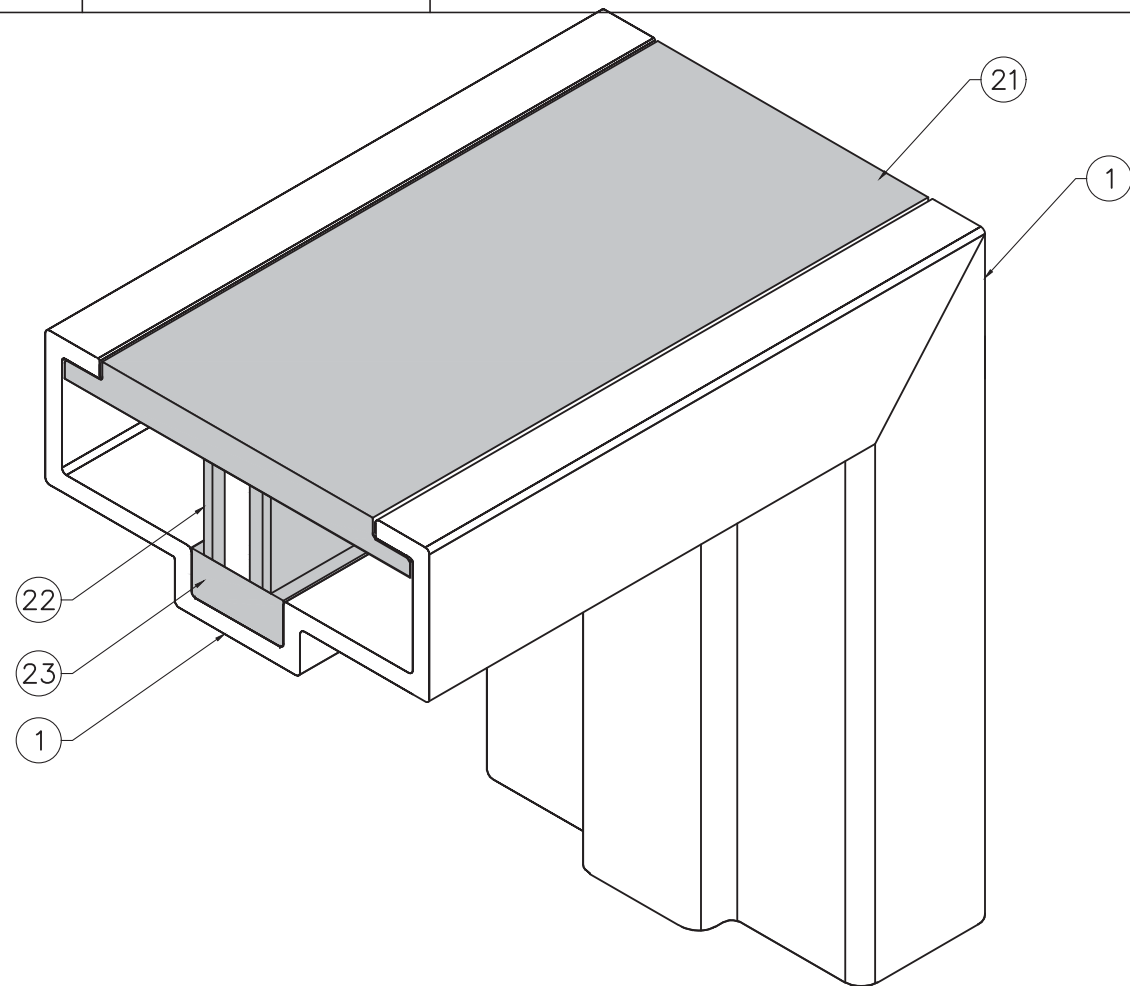


BOM	
DATE	08.18.2023
SCALE	AS SHOWN
DRAWN	James
PROJECT	MCY 17-005

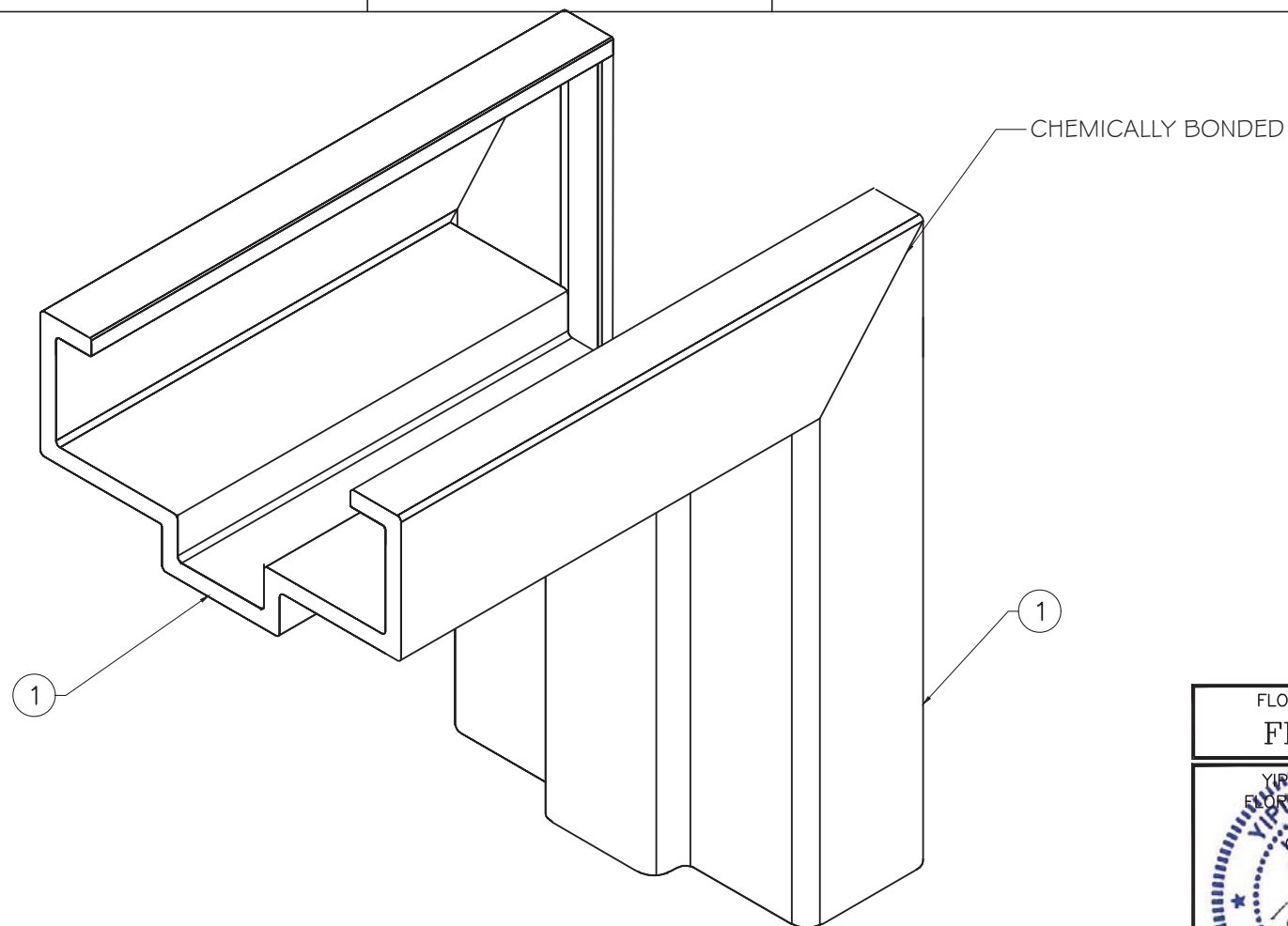
DRAWING NO.  
**AD17-04**

# BILL OF MATERIALS (CONT.)

ITEM	PART	DESCRIPTION	MATERIAL	MANUFACTURER / REMARKS
39	SC-109	#12 X 1-1/2" PHILLIPS FH SMS	STEEL	-
40	-	#8 X 3/4" SMS	STEEL	-
41	-	#8 X 5/8" SMS	STEEL	-
42	-	0.120" SANDSTONE FRP	FRP	CRANE COMPOSITES
43	-	PULTRUDED FIBERGLASS SHEET	PULTRUDED FIBERGLASS	SPECIAL-LITE, INC.
44	-	6 LB URETHANE FOAM SHEET	URETHANE FOAM	DYPLAST
45	-	POLYPROPYLENE HONEYCOMB CORE	POLYPROPYLENE	AIR-COMB OR PLASCORE
46	-	PET FOAM	FOAM	BALTEC
47	-	NEOPRENE GASKET	NEOPRENE	ZERO INTERNATIONAL
48	-	DC995 SILICONE	SILICONE	DOW CORNING
49	-	3/16" X 3/8" FOAM GLAZING TAPE	FOAM	NORSEAL
50	-	SPACER	ALUM.	ALLMETAL INC.
51	-	1/8" SETTING BLOCK	EPDM RUBBER	ZATKOFF SEALS AND PACKING
52	-	1/4" SETTING BLOCK	EPDM RUBBER	GLAZING RUBBER PRODUCTS
53	1000V	DESIGN HARDWARE 2 POINT LOCK EXIT DEVICE	ST/ST	DESIGN HARDWARE @ 39 3/4" FROM BOTTOM



REINFORCEMENT AT HEAD/JAMB



CORNER CONNECTION DETAIL

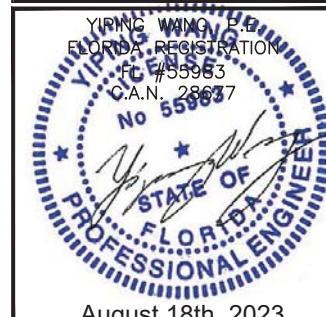
NO.	DATE	DESCRIPTION
1	7/31/17	2017 FBC
2	7/28/20	2020 FBC
3	08/18/23	2023 FBC

**MCY ENGINEERING, INC.**  
 GLAZING CONSULTANTS  
 12781 MIRAMAR PARKWAY #301  
 MIRAMAR, FL 33027 P: 305.271.0117  
 www.MCYEngineering.com mcy@mcyengineering.com

FIBERGLASS FRAME OUTSWING DOOR WITH SKIN (LMI & SMI)  
 SPECIAL-LITE, INC.  
 860 SOUTH WILLIAMS STREET  
 P.O. BOX 6  
 DECATUR, MI 49045  
 WWW.SPECIAL-LITE.COM



FLORIDA APPROVAL:  
**FL#21856.3**



BOM	
DATE	08.18.2023
SCALE	AS SHOWN
DRAWN	James
PROJECT	MCY 17-005

DRAWING NO.  
**AD17-04**